



Chemical Transfer Pumps

RD - Chemical Industry

Chemical Industry

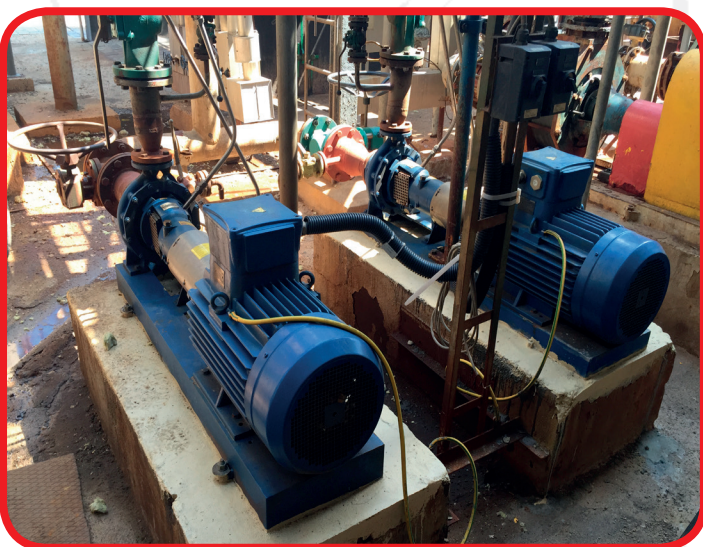
A chemical plant is an industrial process plant that manufactures chemicals, usually on a large scale. A chemical plant commonly has large vessels or sections called units or lines that are interconnected by piping which can carry streams of material. Such material streams can include fluids (gas or liquid carried in piping), sometimes solids or mixtures such as slurries.



Application : Chemical Transfer Pump

PUMP: RDB 50-25D 2C22 K999 6
PERFORMANCE: Flow 45 m³/h – head 60 m
LIQUID: 1,2 DICHLOROETHANE

RD Chemical pumps are made from corrosion resistant materials AISI 904L to ensure that they are suitable for use aggressive industrial fluids. When selecting a chemical pump, it is important you have checked it is compatible with the specific chemical composition that the pump is used for transferring.



RD SERIES

Centrifugal pumps built according to ISO 2858/ISO 5199 norms.
Impeller type: **closed**.
Discharge sizes: **from DN 32 to DN 125**.
Maximum working pressure: **16 bar**.
Flow rate: **up to 500 m³ /hr**.
Differential head: **up to 140 m**.
High hydraulic efficiencies and low NPSH value (investment casting impellers).

